

DOT&PF Statewide Planning Program Updates

AML Infrastructure Symposium

*Sarah Cripe
Waterways & Freight Planner*

April 9, 2026



KEEP ALASKA MOVING

What Transportation Planning Does

Identifies and prioritizes transportation needs



Positions projects for state & federal funding



Supports community access, safety, and mobility



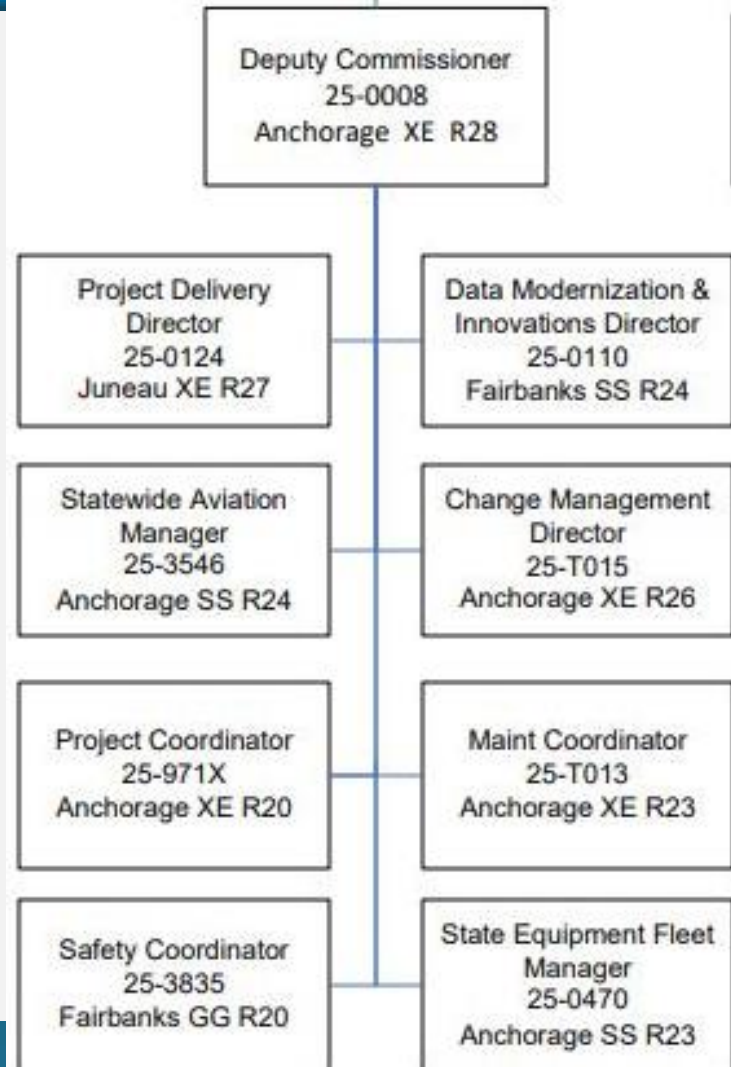
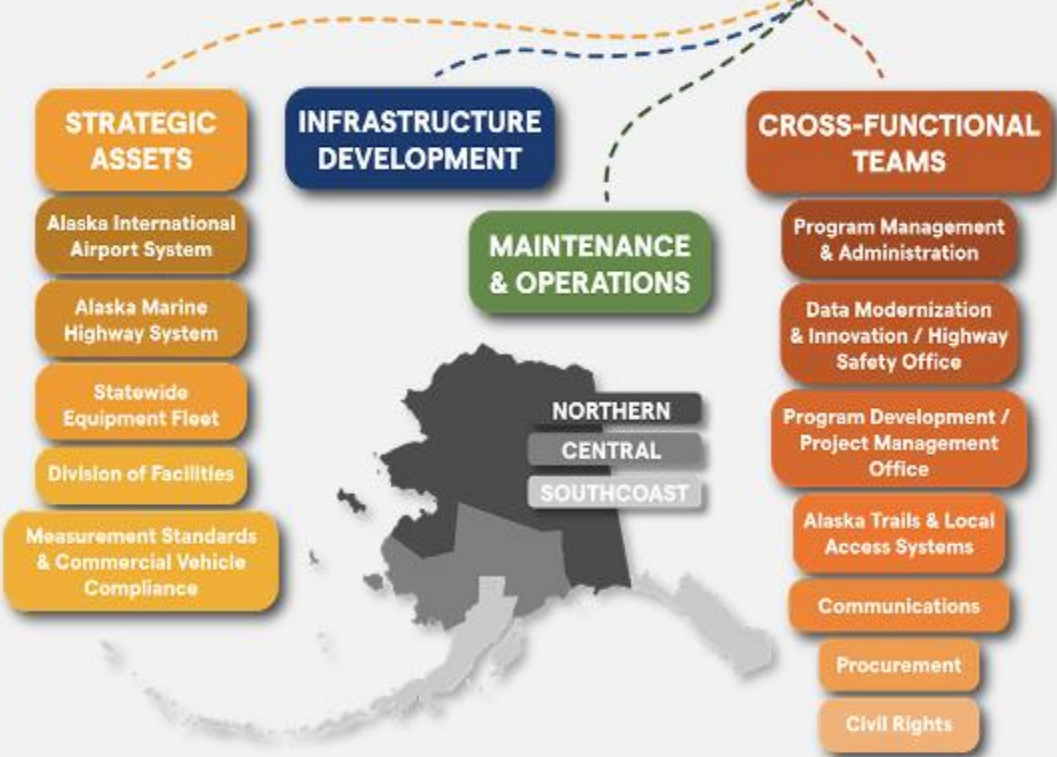
Connects local priorities to statewide investment

Where Planning Fits

Alaska Department of
Transportation & Public Facilities
STRUCTURE



COMMISSIONER
DEPUTY COMMISSIONER



Hierarchy of Plans

Sets statewide policy that guides future planning efforts

Statewide Long-Range Transportation Plan

Statewide Transportation Improvement Plan

Identifies projects for funding over a set number of years. Includes projects identified in area / regional plans

Reviews and incorporates the needs and projects identified in location specific plans. Recommends policy changes to the statewide plan as well as identifying future needs to be addressed at the local or state level

Area/Regional Long-Range Transportation Plans

Location Specific Plans

Responds to local needs. Focuses on creating project recommendations and alternatives. Includes corridor plans/studies and PELs

Planning Framework



Needs to Programming



- Plans (implementation schedules)
- Maintenance Needs
- Community-Identified Needs
- Transportation Asset Management Assessments (pavement & bridge)

10-Year Capital Improvement Program

- Investment Strategies (LRTP)
- Regional 10-year needs, prioritized
- MPO Review

- Capital Project Schedule and Cost Review

STIP
(Rolling)



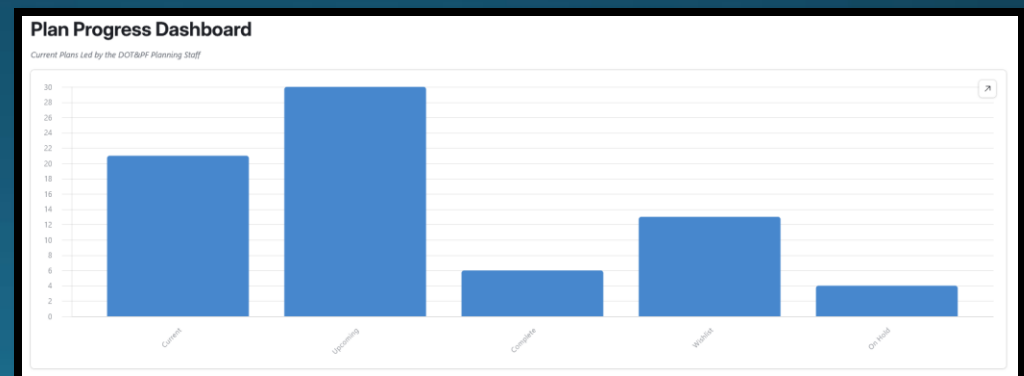
Workload Snapshot

Ongoing

- Alaska Community Connectivity Action Plan (ACCAP)
- Areas of Persistent Poverty: Transit/ACCAP (AOPP)
- ASTAR Triangle Community Road PEL
- Complete Streets Policy Recommendations Report
- Denali Area Airport Planning Study
- King Salmon Airport Master Plan Update
- **L RTP Update (2025-2055)**
- Mat-Su Intra Regional Corridor Plan
- Minnesota Drive Corridor Plan
- Regional Planning Guidebook
- **Southeast Alaska Transportation Plan Update**
- State Management Plan - Transit
- State Rail Plan (2026)
- **Statewide Freight Plan Update (2026-2056) & Waterways Plan**
- TAP Program Guidebook
- Thriving Communities Program
- Transit Asset Management Plan
- Truck Parking Study
- Tudor Corridor Plan
- Waysides Plan
- Yakutat Airport Master Plan Update

Starting 2026-2027

- Alaska's Project Prioritization Process (PPPP)
- Girdwood Airport Master Plan
- Glenn Highway Wildlife-Vehicle Collision Mitigation Study
- Kenai Area Transportation Plan
- Ketchikan Airport Master Plan Update
- Nome Airport Master Plan Update
- Old Glenn Highway Corridor Study - Phase 1 (Arctic Ave)
- Southwest Alaska Area Transportation Plan
- Statewide Transit Plan
- ~Whittier Airport Site Selection (Aviation Part of PWS)



Non-Metropolitan Local Official Cooperation Process Update

Underway: Five-Year Review of the Cooperation Process

DOT&PF will solicit comments from non-metropolitan local officials regarding the effectiveness of this cooperation process for a period of not less than sixty (60) calendar days at least once every five (5) years consistent with 23 CFR 450.210(b)(1).

Public Comment Period: April 08, 2026 – June 07, 2026

To review the draft and provide comments:

<https://dot.alaska.gov/stwdplng/areaplans/related/pubinfo.shtml>

Project Prioritization Process Pilot Program (FY25 Discretionary Grant Award)

Project goals include:

- **Seeking stakeholder and public input** aligned with federal funding priorities and eligibility criteria for the use of data and selection criteria in prioritizing projects
- **Developing a public involvement strategy** to engage impacted communities, especially underserved and underrepresented groups, at key milestones in the project selection process
- **Implementing a prioritization process** that integrates a performance-based and data-driven approach reflecting public benefits
- **Ensuring that the prioritization process is publicly accessible** and transparent
- **Establishing clear, standardized criteria** usable by other transportation organizations, including MPOs and RPOs, and that are scalable and adaptable to different programs
- **Defining a standard set of data sources** for project selection decisions
- **Enabling continuous project intake and ethical integration** of new technologies based on public involvement
- **Establishing a method of informing the public** when decisions to include or not include a project are made in a manner that is compatible with the priority ranking established under the prioritization process



Regional Planning Organizations (RPOs)



Southeast Conference (SEC) designated as Alaska's 4th RPO: February 2026

<https://dot.alaska.gov/stwdplng/rpo/>

Data

Data supports:

Project prioritization

Safety analysis

Funding justification

Resources:

[Alaska DOTPF GeoHub](#)

[Alaska DOT & PF AASP Public Comment Map](#)

[DOT&PF Reporting Tools | Alaska DOTPF GeoHub](#)

[Mapillary](#)

Alaska DOT&PF Planning Field Offices

Deputy Director
of Planning
Judy Chapman

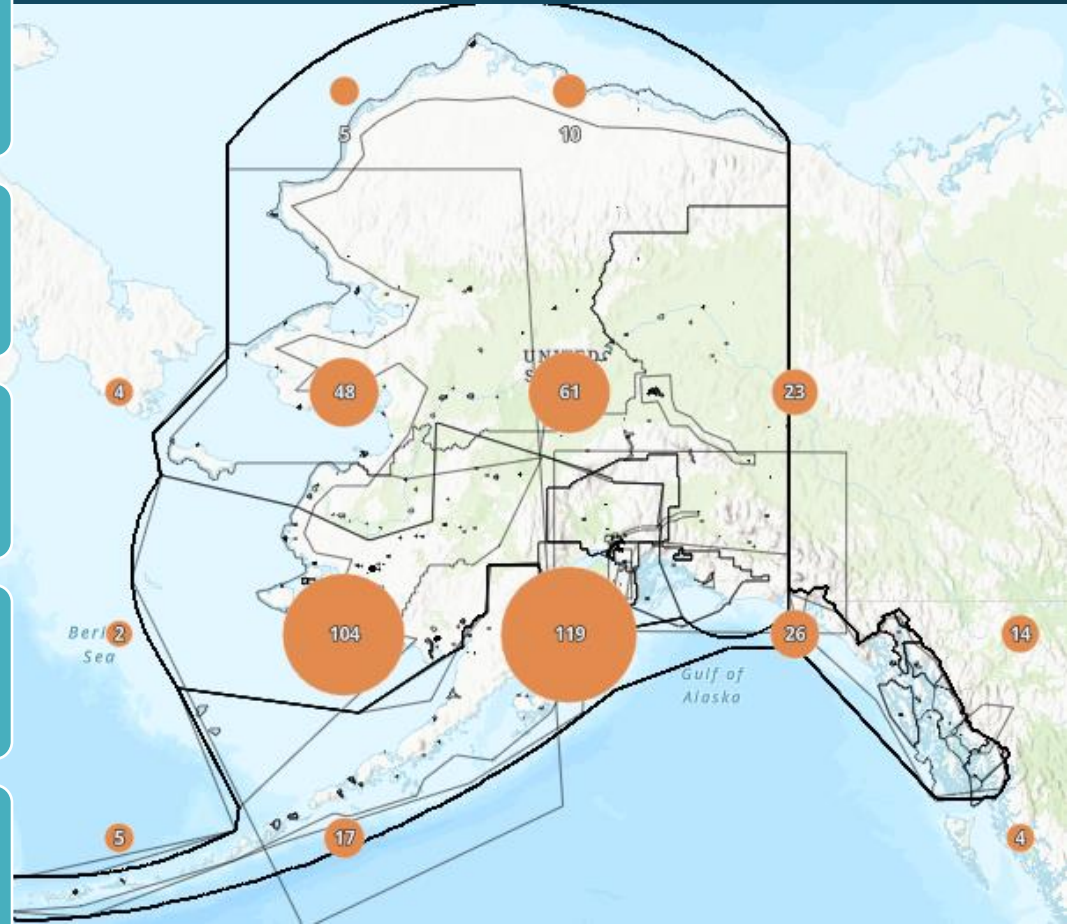
Central Region
Planning Chief
Ben White

Northern Region
Planning Chief
Brett Nelson

Southcoast Region
Planning Chief
Jill Melcher

Statewide
Planning Chief
Sara Lucey

Multimodal Planning
Chief
Acting: James Starzec



<https://dot.alaska.gov/stwdplng/>



DOT&PF's Transportation Planner

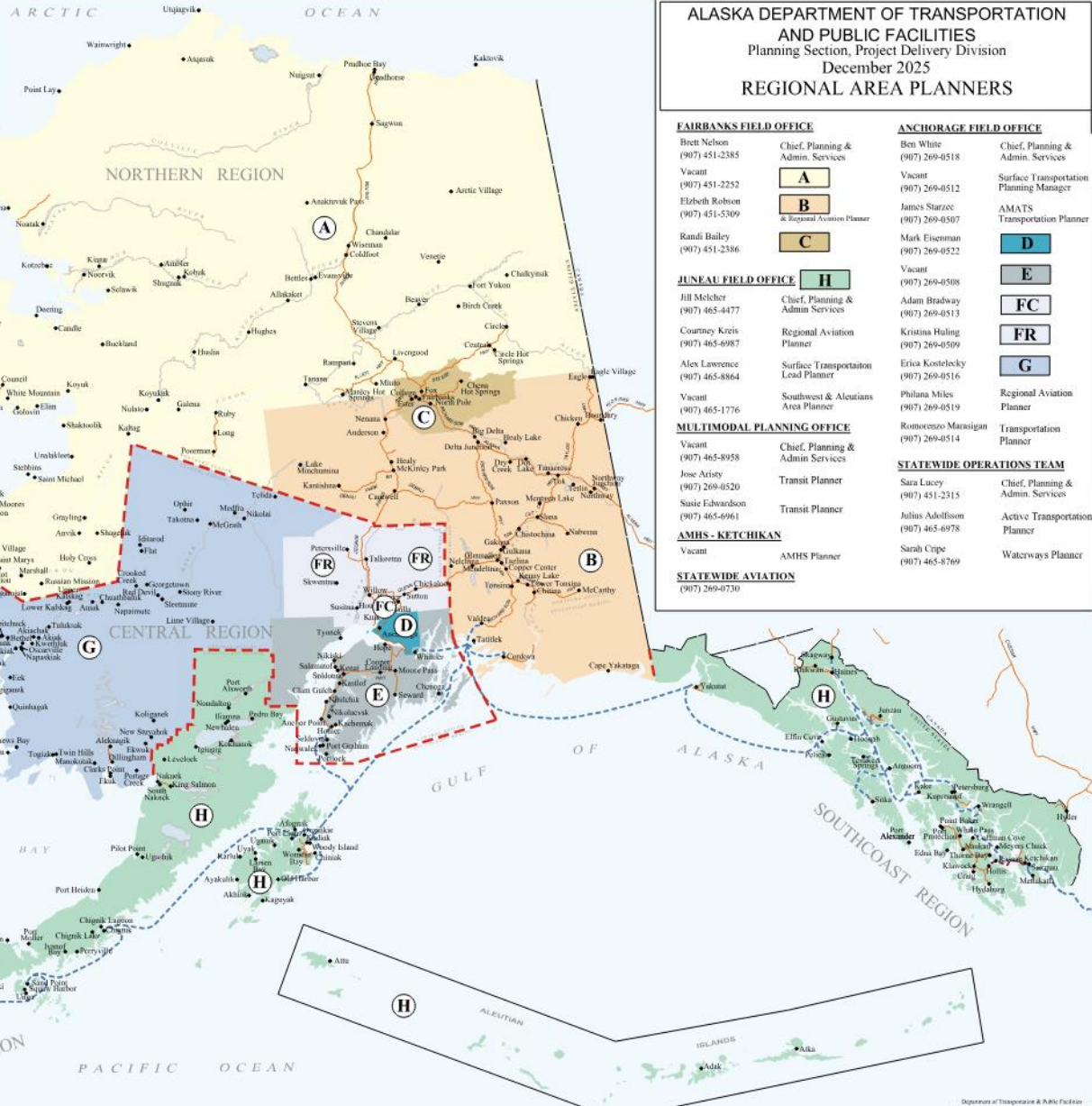
City or Town Center • Skagway

DOT & PF Region - - - - -

AMHS Ferry Route - - - - -

IFA Ferry Route - - - - -

Road ————



ALASKA DEPARTMENT OF TRANSPORTATION AND PUBLIC FACILITIES Planning Section, Project Delivery Division December 2025 REGIONAL AREA PLANNERS

FAIRBANKS FIELD OFFICE

Brett Nelson (907) 451-2385 Chief, Planning & Admin. Services

Vacant (907) 451-2252 **A**

Elzbeth Robson (907) 451-5309 **B** Regional Aviation Planner

Randi Bailey (907) 451-2386 **C**

ANCHORAGE FIELD OFFICE

Ben White (907) 269-0518 Chief, Planning & Admin. Services

Vacant (907) 269-0512 Surface Transportation Planning Manager

James Starzec (907) 269-4507 AMATS Transportation Planner

Mark Eisenman (907) 269-0522 **D**

Vacant (907) 269-0508 **E**

Adam Bradley (907) 269-0513 **FC**

Kristina Huling (907) 269-0509 **FR**

Erika Kostelceky (907) 269-0516 **G**

JUNEAU FIELD OFFICE **H**

Jill Melcher (907) 465-4477 Chief, Planning & Admin Services

Courtney Kreis (907) 465-6987 Regional Aviation Planner

Alex Lawrence (907) 465-8864 Surface Transportation Lead Planner

Vacant (907) 465-1776 Southwest & Aleutians Area Planner

STATEWIDE OPERATIONS TEAM

Romocenzo Manganini (907) 269-0514 Transportation Planner

Sara Lucey (907) 451-2315 Chief, Planning & Admin. Services

Julius Adolfsson (907) 465-6978 Active Transportation Planner

Sarah Crpe (907) 465-8769 Waterways Planner

MULTIMODAL PLANNING OFFICE

Vacant (907) 465-8958 Chief, Planning & Admin Services

Jose Ariste (907) 269-0520 Transit Planner

Sasie Edvardson (907) 465-6961 Transit Planner

AMHS - KETCHIKAN

Vacant AMHS Planner

STATEWIDE AVIATION
(907) 269-0730

Questions....

Thank You.



Sarah Cripe
907-465-8769
sarah.cripe@alaska.gov



Coverage by Alaska DOT Staff:
Sunset from Anchorage International Airport. By Christopher Cummins
Alaska Range from the Richardson Highway. By Derek Bishop
Aboard the MV LeConte sailing Lynn Canal to Juneau from Haines. By Andrea DeGroot

KEEP ALASKA MOVING